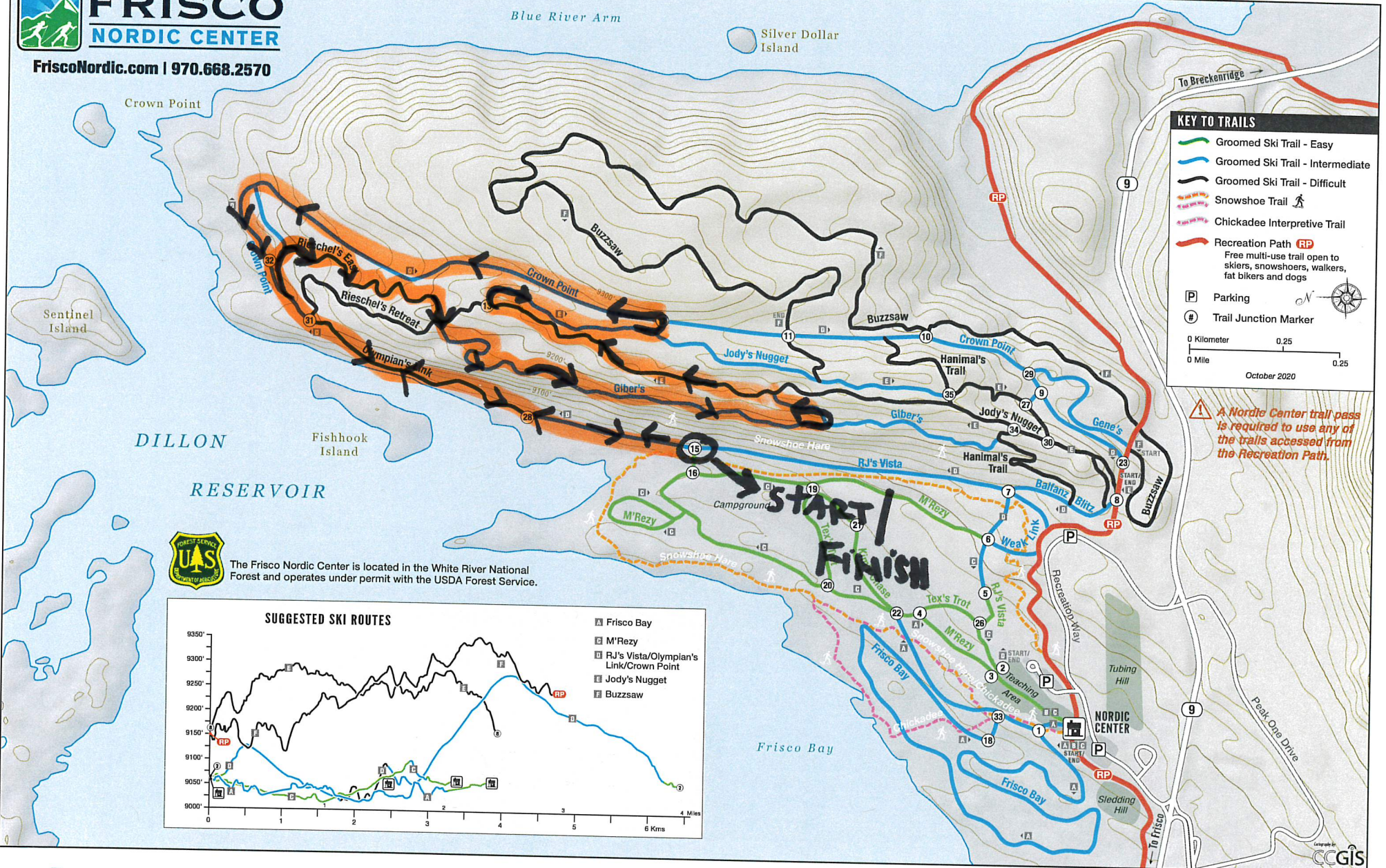


Up: AT EM #3 FEBRUARY 2-6, 2022



FriscoNordic.com | 970.668.2570



KEY TO TRAILS

- Groomed Ski Trail - Easy (Green line)
- Groomed Ski Trail - Intermediate (Blue line)
- Groomed Ski Trail - Difficult (Black line)
- Snowshoe Trail (Dashed line)
- Chickadee Interpretive Trail (Pink line)
- Recreation Path (RP) (Red line)
- Free multi-use trail open to skiers, snowshoers, walkers, fat bikers and dogs
- Parking (P)
- Trail Junction Marker (#)

0 Kilometer 0.25
0 Mile 0.25

October 2020

! A Nordic Center trail pass is required to use any of the trails accessed from the Recreation Path.



The Frisco Nordic Center is located in the White River National Forest and operates under permit with the USDA Forest Service.

